

SMALL TRADES

RESORT '24
womenswear

ZEUS+ΔIONE

HELLAS



SMALL TRADES

RESORT '24
womenswear

Step into the pulsating realm of Zeus+Dione's Resort'24 Collection, where past and present intertwine and the soul-stirring legacy of Greek artisans, merge with the zeitgeist of the modern world. From the depths of Kalymnos' sponge divers to the nimble hands of Syrrako's master tailors, the journey unfurls Greece's mosaic of profound craftsmanship. Intrigued by the poignant allure of artisans' attire, Marios Schwab charts a cartographic opus, an interplay between the time-worn and the refined. Immaculately tailored trousers, sleeves thoughtfully rolled, and hats steeped in symbolism become the embodiment of each artisan's essence. Jumpsuits and pinstriped tailoring salute Greece's storied outdoor photographers and the barbers draped in pristine white aprons. These garments, akin to exquisite prose, divulge the stories of their wearers.

At the core of this adventure resides Athens, the genesis of the brand's ten-year creative voyage. In a cohesive fusion with the esteemed Athenian purveyors of refinement, such as Christakis - Gentlemen's Tailors, Schwab transforms Spathoto silk into sharp, gender-inclusive creations tailored to perfection. Underscoring the sensual, quasi-tactile relationship between the garment and its wearer, this signature fabric feels almost soothing to the skin. Copper, a primordial element, weaves its thread throughout this oeuvre. It resonates with the essence of tools, materials, and the raw spirit of each trade. Conjuring the fervor of coppersmith workshops in Piraeus and Northern Greece, copper reveals itself as a leitmotif, adorning the collection with lustrous hardware and imbuing the colour palette. Fuchsia, International Klein Blue, the eternal duality of black and white, khaki interwoven with golden threads, silver-metallic notes, and the patina's verdant hues manifest the metamorphosis of copper's journey.

In homage to the black-veiled female figure that graces the Greek landscape, the women's collection emerges as a melodic sigh, interlacing resilient spirits and concealed narratives within Schwab's design perspective. Immersed in the enigmatic persona of Michael Cacoyannis' widow in "Zorba the Greek," the somber beauty of Marina in "The Girl in Black," or the indomitable Madalena of Finos Film productions, the designs resound with purpose, harboring untold secrets.

For men, the collection unfolds against the backdrop of Greece's resplendent metamorphosis during the decades of the 1930s, 1940s, and 1950s. Echoes of poetry, harmonies of rebetiko music, and whispers of architectural marvels, blend to create an impactful symphony. From the introspective verses of Ritsos and Elytis to the echoes of modernist architectural pioneers, like Pikionis and Konstantinidis, this collection captures the essence of the "Golden Era."

In a bold creative leap, the standpoint expands, juxtaposing design elements with finesse. The Mykonian fisherman's cap, artisanal embroideries sourced from Aristides Tzonevrakis' atelier in Argos, and the purity of Spetses' white Capri pants effortlessly synchronize, whilst classic black thick-framed glasses emerge as an ode to the visionary poets George Seferis and C.P. Cavafy. Neoprene wearables, pleated and sculpted from sportswear techno-fabrics, challenge conventions by transforming into sublime evening ensembles. In creative alliance with Minas Jewelry, metallic embellishments reminiscent of fishing sinkers were incorporated into the hems of dresses, invoking diver aestheticism.











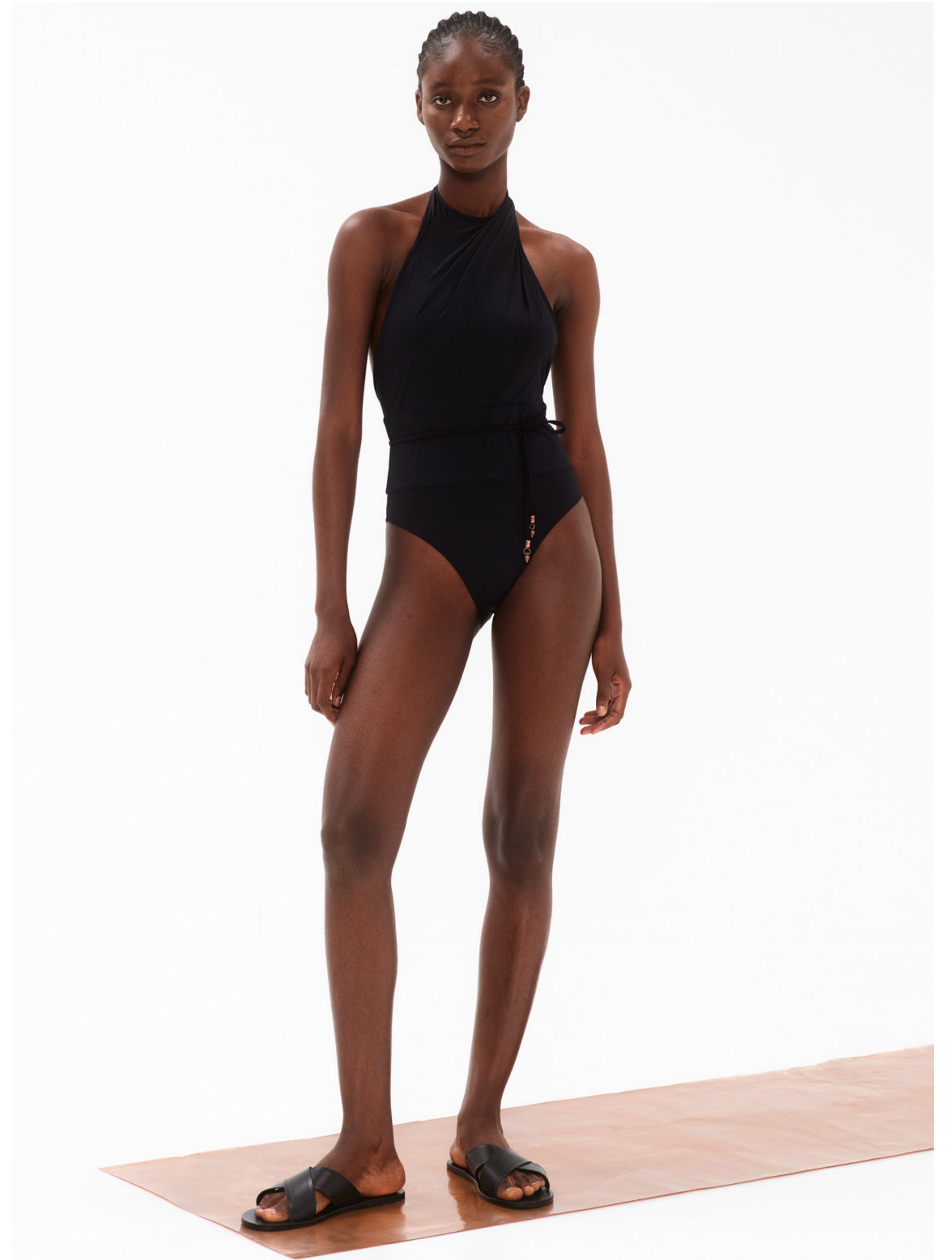


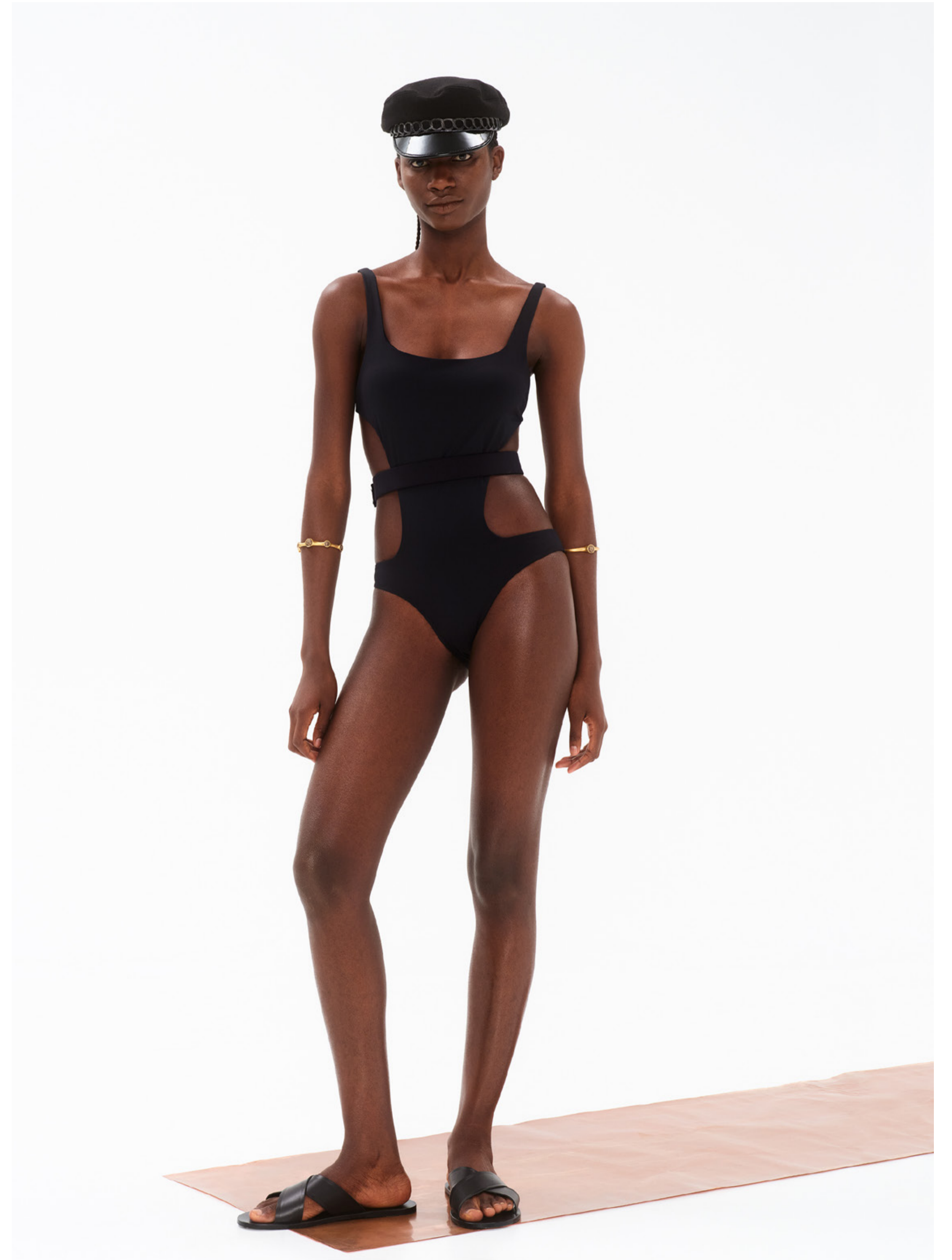


































































2-3. **Velo** dress, CLDR0773/123, magenta.



8. **Maira** dress CLDR0779/123, magenta.

9. **Hera** blouse, CLBL0428/123, magenta.
9. **Lichnos** skirt, CLSK0230/397, black pinstripe.



12. **Ilida** blouse, CLBL0431/123, magenta.
12. **Paxi** shorts CLSH0104/123, magenta.

13. one piece, SWOP/123, magenta.



16. **Notos** bodysuit CLBS0007/011, khaki.
16. **Nemea** skirt, CLSK0228/011, khaki.

17. **Hera** blouse, CLBL0428/011 khaki .
17. **Paxi** shorts CLSH0104/011 khaki.



20. **Faros** coat, CLCO0041/021, gold.

21. **Krikeli** trousers, CLTR0361/397, black pinstripe.
21. **Maira** dress CLDR0779/011, khaki.



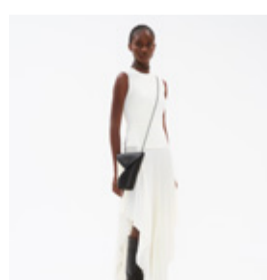
24. one piece, SWOP/021, black, gold.

25. **Ammos** caftan CLCA0237/003-, ivory.



28. **Symi** dress, CLDR0791/001, black.

29. one piece, SWOP/001, black.



32-33. **Symi** dress, CLDR0791/003, ivory.



36. **Kalymnos** dress CLDR0771/003, ivory.

6. **Hera** blouse, CLBL0428/123, magenta.
6. **Nemea** skirt, CLSK0228/123, magenta.

7. **Gaia** bodysuit CLBS0006/123, magenta.
7. **Dionysus** shorts, CLSH0103/397, black pinstripe.

10. **Hera** top, CLTP0327/123, magenta.
10. **Abaton** trousers, CLTR0354/123, magenta.

11. **Ivy** shirt, CLSR0193/123, magenta.
11. **Nemea** skirt, CLSK0228/123, magenta.

14. two-piece SWTP/011, khaki.

15. one piece, SWOP/021, gold.

18-19. **Velo** dress, CLDR0773/011, khaki.

22-23. **Hera** top, CLTP0327/011, khaki.
22-23. **Nemea** skirt, CLSK0228/011, khaki.

26. **Ammos** caftan CLCA0238/334, light beige - blue stripes.

27. one piece, SWOP/001, black.

30. one piece, SWOP/001, black.

31. **Petra** jumpsuit, CLJU0034/001, black.

34. one piece, SWOP/003, ivory.

35. one piece, SWOP/003, ivory.

38. **Lichnos** skirt, CLSK0230/397, black pinstripe

39. **Kalymnos** dress CLDR0771/003, ivory.



40. **Net** dress CLDR0799/002, white.

41. **Net** dress CLDR0800/001, black.



44-45. **Chord** skirt, CLSK0232/001, black .



48. **name** blazer, CLBZ0046/397, black pinstripe.
48. **name** trousers, CLTR0287/397, black pinstripe.

49. **name** shirt, CLSR0199/083, mixed color



52. **Mostra** blazer, CLBZ0070/001, black.
52. **Finistrini** trousers, CLTR00350/001, black.

53. **Hestia** dress CLDR0787/058, black-ivory.



56. **Marmari** blouse, CLBL0425/001, black.
56. **Finistrini** trousers, CLTR00350/001, black.

57. one piece, SWOP/021, gold.
57. **Lichnos** skirt, CLSK0230/397, black pinstripe.



60. **Akoni** dress, CLDR0777/455, yves klein blue.
61. **Maira** dress CLDR0779/455, yves klein blue.



60. **Nostos** caftan, CLCA0240/338, black-blue stripes.
61. one piece, SWOP/455, yves klein blue.



68. **Hera** blouse, CLBL0428/455, yves klein blue.
68. **Faltseta** trousers, CLTR0351/130, royal blue.

69. **Kore** dress CLDR0775/455, yves klein blue.



72. **Helios** dress CLDR0781/021, gold.

73. **Helios** dress, CLDR0781/021, silver.

42. **Ostraco** dress, CLDR0785/001, black.

43. **Korali** dress, CLDR0785/001, black.

46. **Crocus** dress, CLDR0790/106, navy stripe.

47. **Crocus** top, CLTP0339/106, navy stripe.
47. **Krikeli** trousers, CLTR0361/397, black pinstripe.

50-51. **Lachouri** dress, CLDR0770/397, black pinstripe.

54. **Kymata** vest, CLVE0020/003, ivory.
54. **Lichnos** skirt, CLSK0230/397, black pinstripe.

55. **Aeolia** blouse, CLBL0435/123, magenta.
55. **Dionysus** shorts, CLSH0103/397, black pinstripe.

58-59. **Akoni** dress, CLDR0792/003, ivory.

62. **Notos** bodysuit CLBS0007/455, yves klein blue.
62. **Nemea** skirt, CLSK0233/455, yves klein blue.

63. **Ivy** shirt, CLSR0193/180, ivory-blue
63. **Paxi** shorts CLSH0104/455, yves klein blue.

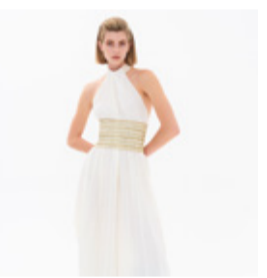
66-67. **Ilida** blouse, CLBL0431/455, yves klein blue.
66-67. **Paxi** shorts CLSH0112/338, black-blue stripes.

70. **Crocus** dress CLDR0789/021, gold.

71. **Crocus** top, CLTP0338/021, gold.
71. **Alcestes** trousers, CLTR0369/021, gold.

74. **Roka** dress CLDR0782/001, black.

75. **Astros** blouse, CLBL0430/001, black.
75. **Finistrini** trousers, CLTR00350/001, black.





76. **Aphaia** dress, CLDR0786/001, black.



78. **Astro** dress CLDR0774/021, gold.

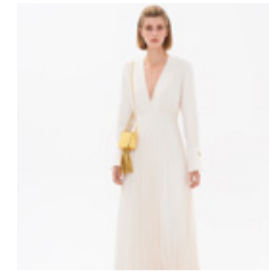


80-81. **Velo** dress, CLDR0773/011, khaki.

77. **Ilida** jumpsuit, CLJU0035/001, black.



79. **Aphaia** dress, CLDR0786/003, ivory.



Creative direction
Marios Schwab

Photography
Yiorgos Kaplanidis

Hair
Jose Quijano

Makeup
Athina Karakitsou
Maria Vezyraki

Models
Ava (Ace models)
Cristine (Dmodels)
Deborah (Ace models)

ZEUS+ΔIONE

Taki 6-8

10554

Athens, Greece

+ 210 3253839

www.zeusndione.com

@zeusndione

zeusndione.com