

L é a i n a

RESORT '23

ZEUS+ΔIONE

HELLAS



## Léaina

The lion in the Mycenaean civilization signifies the statue and ferocity of the professional or momentary warrior, the pure capacity to spring into action at the critical time. Their prestige is not of swiftness but strength and lithe elegance, lusty sensuality, sumptuous pelage. The play of light and dark on their bodies is mirrored in symbolic ambivalence.

This Zeus & Dione Resort '23 collection has a nonchalant ease. Pillowry dresses, shirts and separates achieved with pleating and draping, have been pulled back to the body with bejeweled cording. The emphasis is on effortless dresses that transition easily from day to evening. Finely pleated viscose dresses are an evolution of the Fortuny 'Delphos' dress. Swimwear can be worn from the beach straight to dinner.

Micro jacquard jersey echoes the '70s, a golden era for Greek popular culture. Polo tops, dresses and twin sets can be mixed and matched. Soft denim flared trousers, casual tops and pleated shorts have been embellished with serpent motifs that pay homage to Cyprus.

Signature spathoto silk has been innovatively draped around the body and cut on bias to create graphic and bold lines. It has also been used as contrasting bands on collars, sleeves and side panels as a framing tool. The collection colors palette has strong roots in the core visual vocabulary of the brand and this session includes red, sun, navy, green and chocolate.

Decorative embroideries and precious hand-crafted details depicting carnations can be found around necklines. Jewelry plays with the past and the present. Golden lion heads, that have a symbolic importance in Mycenaean culture, decorate uniquely shaped freshwater pearls. Softly triangular plectra used for bouzouki strumming have been translated into gold necklaces, bracelets, rings and earrings with engraved carnation motifs.

























































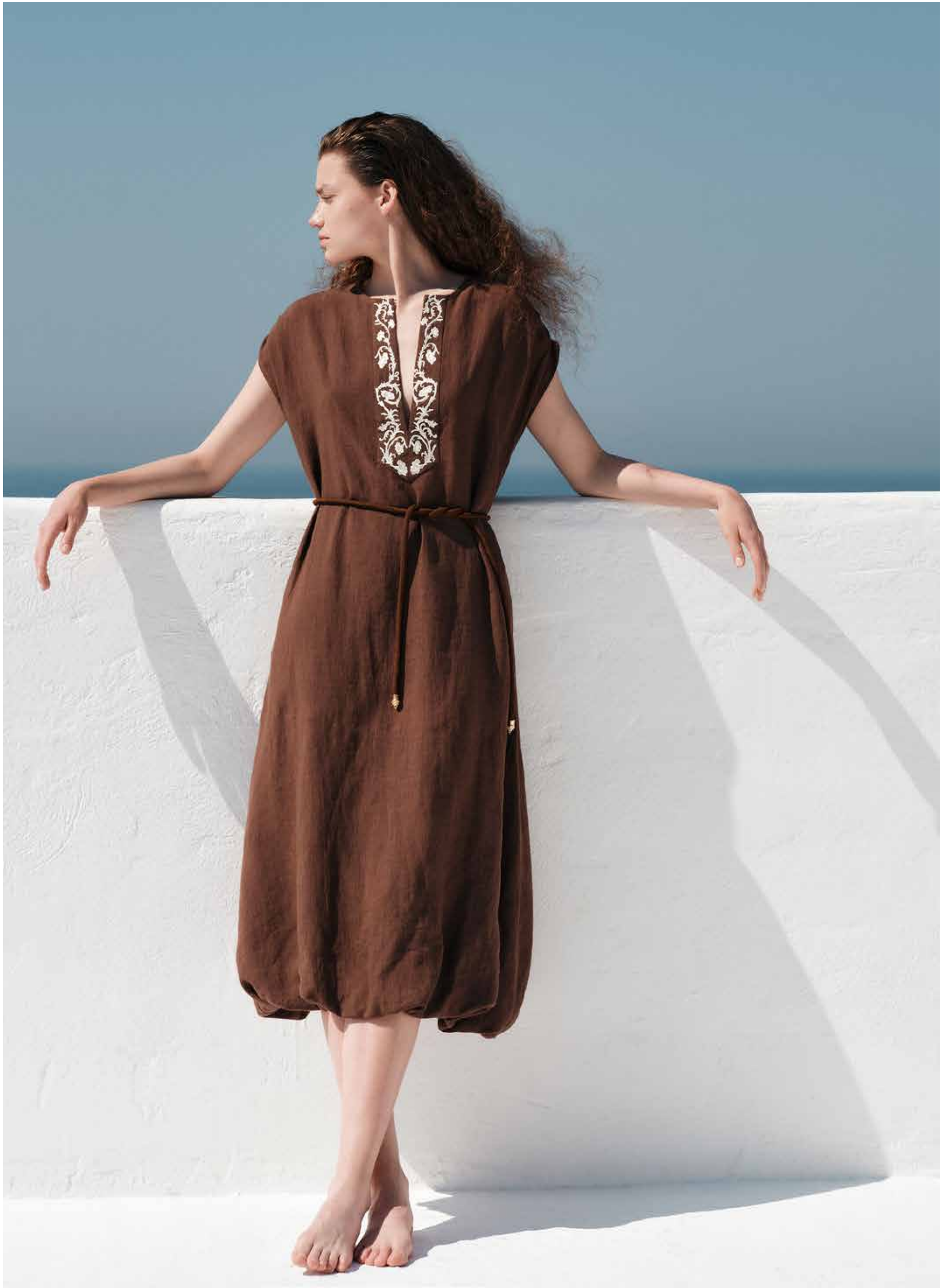
























































































































**2**  
**Aelo** top, CLTP0292/273, golden yellow.  
**Alcestes** trousers, CLTR0302/273, golden yellow



**6**  
**Hera** blouse, CLBL0378/273, golden yellow.  
**Nemea** skirt, CLSK03208/273, golden yellow.



**8**  
**Ivy** shirt, CLSR0150/003, ivory.  
**Nemea** skirt, CLSK03208/434, scarlet red.



**10-13**  
**Gaia** bodysuit, CLBS0002/434, scarlet red. **Mirtos** swimwear SWOP0121/ 434, scarlet red.



**16-17**  
**Hermes** dress, CLDR0649/275, denim blue.



**20-21**  
**Mirtos** swimwear, SWOP0125/436, brown, navy blue.



**24**  
**Calyx** caftan, CLCA0212/163, ivory, red.



**26**  
**Aiolos** caftan, CLCA0210/440, royal blue, ivory.



**28-29**  
**Apollonia** dress, CLDR0657/411, khaki black stripes. **Pandoura** dress, CLDR0652/411, khaki black stripes.

**4,5**  
**Hera** top, CLTP0297/343, scarlet red.  
**Abaton** trousers, CLTR0303/434, scarlet red.



**7**  
**Hera** blouse, CLBL0378/343, scarlet red.  
**Abaton** trousers, CLTR0303/434, scarlet red.



**9**  
**Gaia** bodysuit, CLBS0002/273434, scarlet red. **Alcyone** trousers, CLTR0306/003, ivory.



**14-15**  
**Hera** top, CLTP0297/273, golden yellow.  
**Ixia** skirt, CLTR0207/275, denim blue.  
**Aster** blouse, CLBL0383/275, denim blue.  
**Argos** trousers, CLTR0297/275, denim blue.



**18-19**  
**Gaia** bodysuit, CLBS0002/435, ivory, navy. **Chord** skirt, CLSK0206/275, denim blue. **Astarte** blouse, CLBL0379/087, sky blue.



**22-23**  
**Iris** dress, CLDR0654/435, ivory, navy. **Lais** dress, CLDR0650/438, berry red.



**25**  
**Aiolos** blouse, CLBL0376/244, ivory, khaki. **Atreas** trousers, CTR0295/007, beige.



**27**  
**Calyx** caftan, CLCA0208/435, ivory, navy.



**32-33**  
**Doris** caftan, CLCA0211/017, green. **Doris** top, CLTP0206/017, green. **Cylix** shorts, CLSH0092/017, green.



**34-35**  
**Aether** blouse, CLBL0381/003, ivory.  
**Cylix** shorts, CLSH0092/017, green.



**37**  
**Oracle** caftan, CLCA0206/442, pecan brown.



**39**  
**Mani** swimwear, SWOP0129/436, brown, navy blue.



**42-43**  
**Porpi** swimwear, SWOP0123/273, golden yellow.



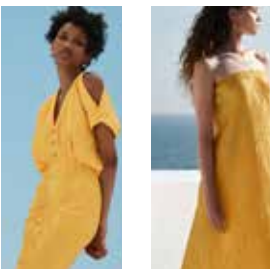
**46-47**  
**Crocus** dress, CLDR0639//078, navy blue.



**50-51**  
**Aurora** dress, CLDR0640/078, navy blue,.



**54-55**  
**Seralia** dress, CLDR0645/001, black. **Seralia** dress, CLDR0645/003, ivory.



**60-61**  
**Ambrosia** dress, CLDR0663/273, golden yellow. **Mantola** dress, CLDR0664/273, golden yellow.



**64-65**  
**Porpi** swimwear, SWOP0123/001, black. **Astros** blouse, CLBL0380/001, black. **Argos** trousers, CLTR0275/001, black.

**36**  
**Hera** blouse, CLBL0377/432, sky blue, brown stripes. **Menae** trousers, CLTR0296/442, pecan brown.



**38**  
**Aelo** top, CLTP0292/435, ivory, navy blue. **Menae** trousers, CLTR0296/442, pecan brown.



**40-41**  
**Oracle** caftan, CLCA0207/273, golden yellow. **Sapfo** blouse CLBL0382/ 273, golden yellow.



**44-45**  
**Rosa** shirt, CLSR0155/437, metallic platinum. **Selas** dress, CLDR0659/437, metallic platinum.



**48-49**  
**Aeropi** dress, CLDR0647/078, navy blue. **Aeropi** dress, CLDR0647/003, ivory.



**52-53**  
**Ilida** jumpsuit, CLJU0026/078, navy blue. **Ilida** jumpsuit, CLJU0026/003, ivory.



**56-59**  
**Esther** dress, CLDR0638/003, ivory. **Esther** dress, CLDR0646/273, golden yellow.



**62-63**  
**Alea** shirt, CLSR0149/273, golden yellow. **Ixia** skirt, CLTR0207/275, denim blue. **Maui** swimwear SWTP0084/ 273, golden yellow.



**66-67**  
**Fira** sarong, CLSA0003/001, black.







**68-69**  
**Marsya** dress, CLDR0642/001, black.



**72**  
**Anemone** dress, CLDR0658//087, sky blue.



**74**  
**Carina** dress, CLDR0653/436, brown, navy blue.



**76-77**  
**Phoebe** top, CLTP0293/436, brown, navy blue. **Atreas** trousers, CTR0295/007, beige.



**80**  
**Hera** blouse, CLBL0378/435, ivory, navy.



**82**  
**Ivy** shirt, CLSR0150/435, ivory, navy. **Kynthia** trousers, CLTR0304/435, ivory, navy.



**84**  
**Maira** dress, CLDR0644/435, ivory, navy.



**86**  
**Hera** dress, CLDR662/434, scarlet red.

**88-89**  
**Harpe** dress, CLDR0651/434, scarlet red.



**70-71**  
**Mirtos** swimwear, SWOP0121/001, black.



**73**  
**Hermione** top, CLTP/087, sky blue.  
**Menae** trousers, CLTR0296/078, navy blue.



**75**  
**Phoebe** top, CLTP0293/436, brown, navy blue. **Leon** trousers, CLTR0305/436, brown, navy blue.



**78-79**  
**Phoebe** top, CLTP0293/435, ivory, navy. **Ixia** skirt, CLSK0209/435, ivory, navy. **Leon** trousers, CLTR0305/435, ivory, navy.



**81**  
**Hestia** blouse, CLBL0374/435, ivory, navy. **Abaton** trousers, CLTR0303/435, ivory, navy.



**83**  
**Ilidia** blouse, CLBL0384/00, black. **Kynthia** trousers, CLTR0304/435, ivory, navy.



**85**  
**Hyacinth** dress, CLDR0637/435, ivory, navy.



**87**  
**Kaladi** swimwear, SWOP0120/434, scarlet red.





Photographer: Yiorgos Kaplanidis

Hair: Jose Quijano

Make up: Efi Ramon

Models: Ashanti (ACE models) & Lisa (Dmodels)

**ZEUS+ΔIONE**

Taki 6-8, Athens, Greece  
10554  
+30 210 3253839  
#zeusndione





